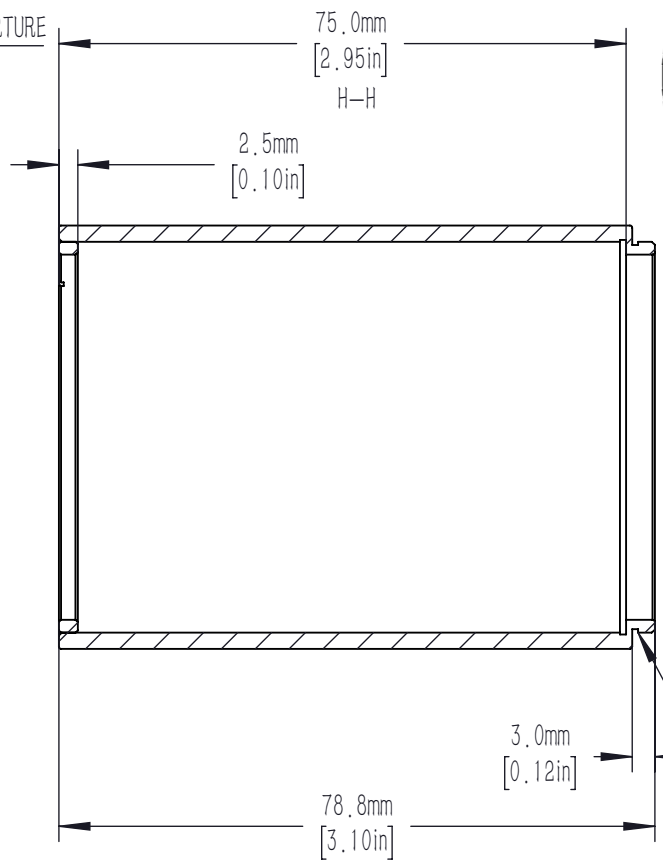
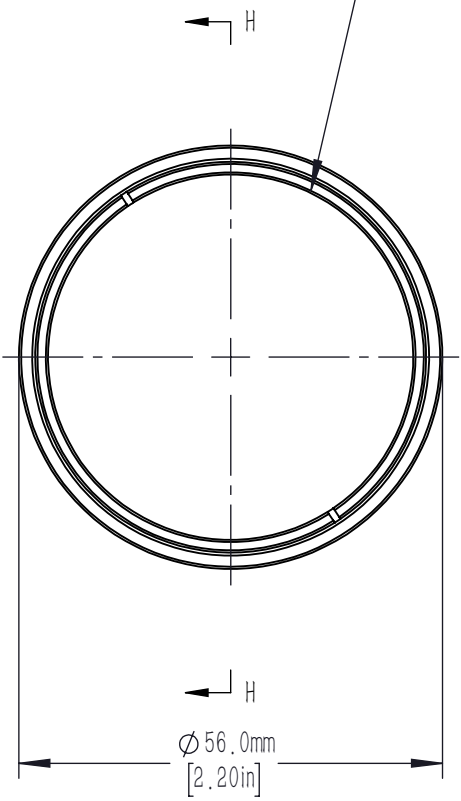


SM2(  $\phi 2.035-40$  ) SERIES  
 INTERNAL THREAD  
 1 SM2 RETAINING RING INCLUDED  
 $\phi 48.3\text{mm}$  [  $\phi 1.90\text{in}$  ] CLEAR APERTURE



SM2(  $\phi 2.035-40$  ) SERIES  
 EXTERNAL THREAD

DRAWING PROJECTION		CSSM2-75A				
	NAME	DATE	MATERIAL	WEIGHT	SCALE	REV
DRAWN	NIC	9th/June/2025	SM2 LENS TUBE, 75mm DEEP	0.227	1:1	VI
APPROVAL	DICK	9th/June/2025				
THE DRAWINGS ARE ONLY FOR TYPE SELECTION INFORMATION			shop.zolix.com.cn			