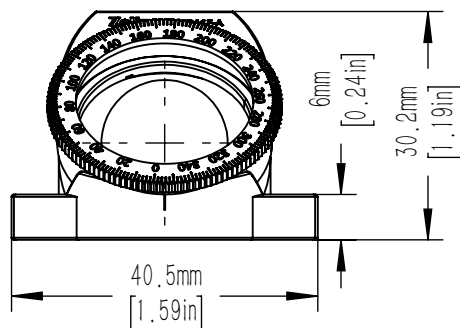
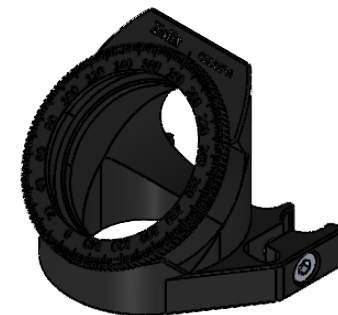
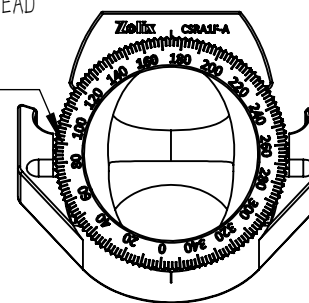
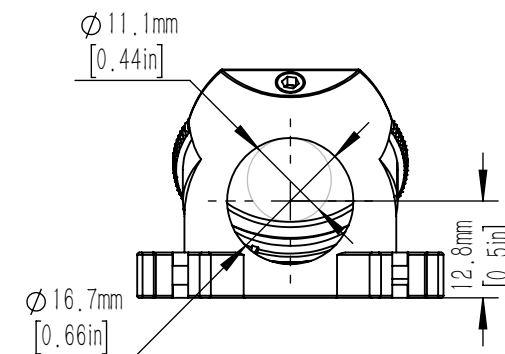
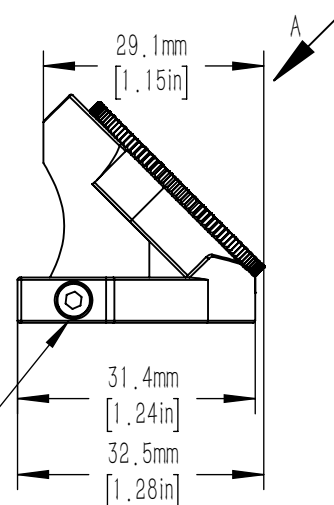


SM1 ($\varnothing 1.035''-40$) SERIES INTERNAL THREAD
 THREAD DEPTH: 7.5mm [0.30in]
 SM1 RETAINING RING INCLUDED



CAGE ROD LOCKING SCREW
 2.0mm HEX KEY OPERATION
 BILATERAL INSTALLATION



DRAWING PROJECTION			CSRA1F-A		Zolix			
	NAME	DATE						
DRAWN	NIC	4th/August/2025	45° MOUNTING ADJUSTMENT BRACKET		MATERIAL	WEIGHT	SCALE	REV
APPROVAL	DICK	4th/August/2025			FOLLOW THE PARTS	0.018	1:1	V1
THE DRAWINGS ARE ONLY FOR TYPE SELECTION INFORMATION					shop.zolix.com.cn			