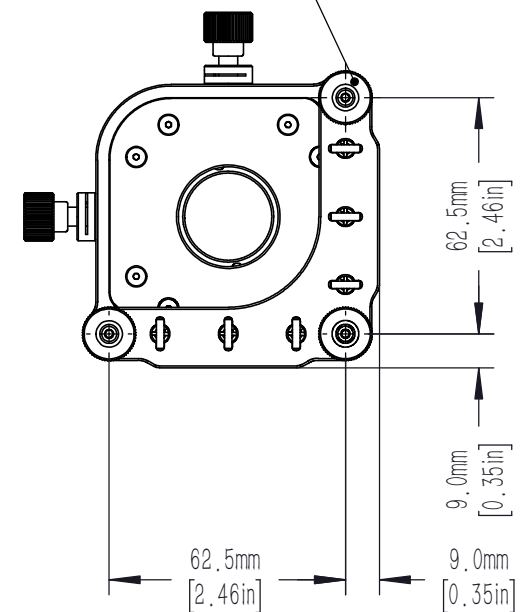
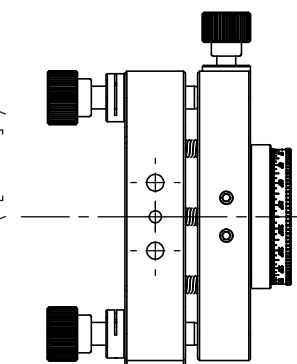
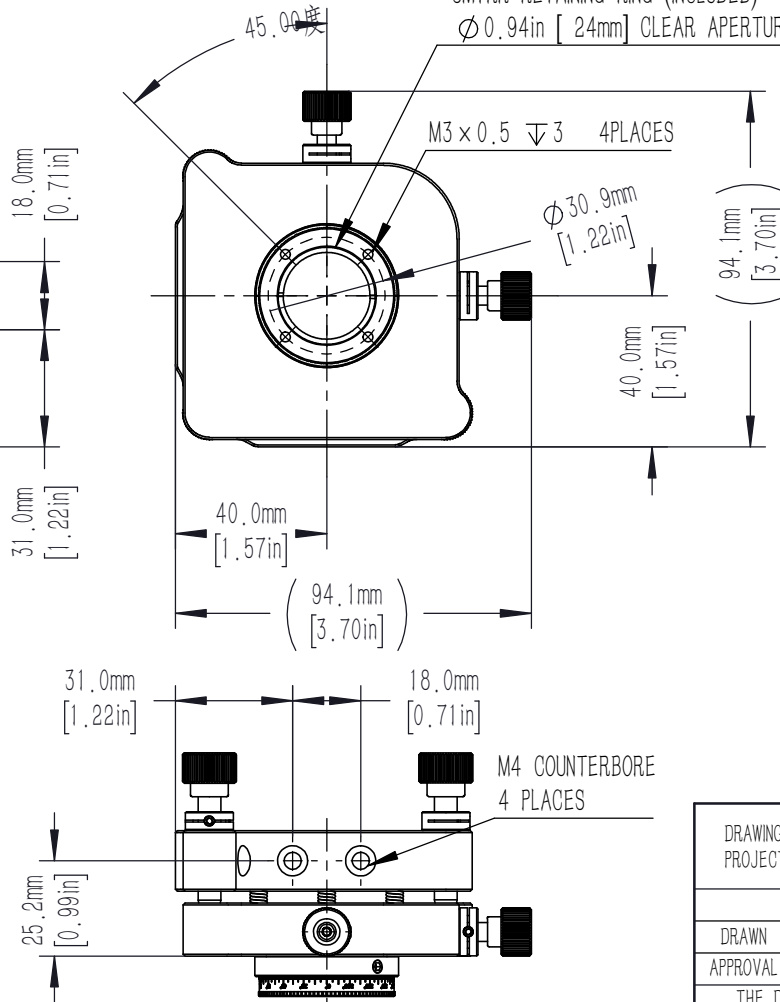
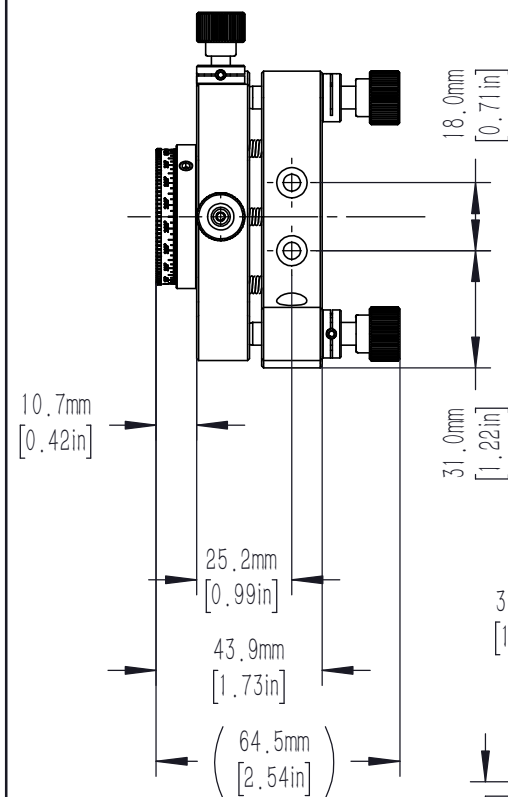
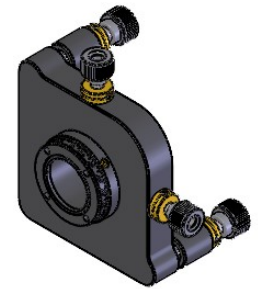
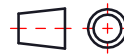


SM1 (1.035in-40) SERIES LENS CELL
 PROVIDES 360 MANUAL ROTATION
 ACCEPTS 1.00in [25.4mm] OPTICS
 UP TO 0.57in [14.6mm] THICK
 SM1RR RETAINING RING (INCLUDED)
 \varnothing 0.94in [24mm] CLEAR APERTURE

M6X0.25 LOCKABLE ADJUSTER SCREWS
 PROVIDES $\pm 4^\circ$ TOTAL ANGULAR DISPLACEMENT
 (0.23° PER REVOLUTION)
 3 PLACES



DRAWING PROJECTION						NMUX25.4			Zolix		
	NAME	DATE		6 AXIS MIRROR MOUNT			MATERIAL	WEIGHT	SCALE	REV	
DRAWN	NIC	30th/OCT/2025					FOLLOW THE PARTS	0.45Kg	1:2	V1	
APPROVAL	DICK	30th/OCT/2025		shop.zolix.com.cn							
THE DRAWINGS ARE ONLY FOR TYPE SELECTION INFORMATION											